

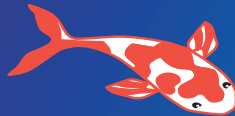
Eliminates Blue-Green Algae & Keeps Water Clear!

GreenClean[®]

Granular

Works great on ornamental streams and waterfalls.

**CONTROLS
ALGAE BLOOMS**



FIRST AID

If in eyes	<ul style="list-style-type: none"> • Hold eye open and rinse slowly and gently with water for 15 - 20 minutes. • Remove contact lenses, if present, after the first 5 minutes, then continue rinsing eye. • Call a poison control center or doctor for treatment advice.
If on skin or clothing	<ul style="list-style-type: none"> • Take off contaminated clothing. • Rinse skin immediately with plenty of water for 15 - 20 minutes. • Call a poison control center or doctor for treatment advice.
If swallowed	<ul style="list-style-type: none"> • Call poison control center or doctor immediately for treatment advice. • Have person sip a glass of water if able to swallow. • Do not induce vomiting unless told to do so by the poison control center or doctor. • Do not give anything by mouth to an unconscious person.
If inhaled	<ul style="list-style-type: none"> • Move person to fresh air. • If person is not breathing, call 911 or an ambulance, then give artificial respiration, preferably by mouth-to-mouth, if possible. • Call a poison control center or doctor for treatment advice.

HOTLINE NUMBER: Have the product container or label with you when calling a poison control center or doctor, or going for treatment. You may also contact 1-800-222-1222 for emergency medical treatment information.

NOTE TO PHYSICIAN: Probable mucosal damage may contraindicate the use of gastric lavage.

**KEEP OUT OF REACH OF CHILDREN
DANGER – PELIGRO**

1501-8-F

Si usted no entiende la etiqueta, busque a alguien para que se la explique a usted en detalle. (If you do not understand this label, find someone to explain it to you in detail.)

See inside label for additional precautionary statements and directions for use.

Active Ingredient:

Sodium Carbonate Peroxyhydrate*: 42.50%

Other Ingredients: 57.50%

Total: 100.00%

**This product is equivalent to 13.80% Hydrogen Dioxide by weight.*

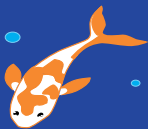
EPA Reg. No. 70299-4 EPA Est. No. 067441-IL-001

Manufactured by: BioSafe Systems, LLC

22 Meadow Street, East Hartford, CT 06108 1-888-273-3088 (toll-free)

GreenClean

Granular



*GreenClean
is Easy to Use.
See Inside for Complete Directions*

**ELIMINATES
BLUE-GREEN ALGAE
& KEEPS WATER CLEAR**

**Get Algae-Free water with
GreenClean Granular!**

POND SIZE	CURATIVE RATE
50 gallons	1 Tablespoon
100 gallons	1.5 Tablespoons
500 gallons	0.5 Cup
1,000 gallons	1 Cup
5,000 gallons	5 Cups
10,000 gallons	10 Cups

- ✓ Works great on ornamental streams and waterfalls
- ✓ Great for pond-less waterfalls
- ✓ Effective over a wide range of pH conditions

EPA Reg. No. 70299-4 EPA Est. No. 067441-IL-001 Manufactured by: BioSafe Systems, LLC
22 Meadow Street, East Hartford, CT 06108 1-888-273-3088 (toll-free)

GREENCLEAN® GRANULAR

PRECAUTIONARY STATEMENTS HAZARDS TO HUMANS AND DOMESTIC ANIMALS

DANGER: Corrosive. Causes irreversible eye damage. Do not get in eyes, on skin or on clothing. Wear protective eyewear (goggles, face shield or shielded safety glasses). Harmful if swallowed, inhaled or absorbed through skin. Avoid breathing dust. Wash thoroughly with soap and water immediately after handling and before eating, drinking, chewing gum, using tobacco, or using the toilet. Remove and wash contaminated clothing before reuse. When prolonged or repeated contact may occur, use chemically resistant gloves and full body clothing.

ENVIRONMENTAL HAZARDS

This pesticide is toxic to birds. Do not contaminate water when cleaning equipment or disposing of equipment wash water or rinsate. GreenClean Granular is **NOT** intended for use in drinking water.

PHYSICAL AND CHEMICAL HAZARDS

Strong oxidizing agent. **Corrosive.** Mix only with water in accordance with label instructions. Do not bring in contact with other pesticides, cleaners or oxidative agents.

DETERMINING WATER VOLUME

Measure length (L), width (W), and average depth (D) in feet (ft) or meters (m) and calculate volume using one of the following formulas:

Square/ Rectangular:	$L(ft) \times W(ft) \times D(ft) \times 7.5 = \text{Gallons}$ $L(m) \times W(m) \times D(m) \times 1000 = \text{Liters}$
Circular/ Elliptical:	$L(ft) \times W(ft) \times D(ft) \times 5.9 = \text{Gallons}$ $L(m) \times W(m) \times D(m) \times 786 = \text{Liters}$

1 acre-foot of water = water measuring:

• 208.7 ft long x 208.7 ft wide x 1 ft deep • 43,560 cubic feet • 325,851 gallons • 2,780,000 pounds

$$\frac{\text{Avg. Length(ft)} \times \text{Avg. Width(ft)} \times \text{Avg. Depth(ft)}}{43,560} = \text{acre-feet of water} \qquad \frac{\text{Avg. Length(ft)} \times \text{Avg. Width(ft)}}{43,560} = \text{acres}$$

APPLICATION RATES

General Treatment Rates:

	HEAVY ALGAE GROWTH	LOW ALGAE GROWTH / MAINTENANCE
GRANULAR: Small Volume	3-16 Tablespoons of GreenClean Granular per 1,000 gallons of water.	1-5 teaspoons of GreenClean Granular per 1,000 gallons of water.
For example: backyard water gardens, ornamental ponds, ornamental waterfalls (3 tsp. = 1 Tbs., 16 Tbs. = 1 Cup, 2 Cups = 1 lb.)		
GRANULAR: Large Volume	90-500 pounds of GreenClean Granular per million gallons of water*. - OR - 30-170 pounds of GreenClean Granular per acre-foot of water*.	9-50 pounds of GreenClean Granular per million gallons of water. - OR - 3-17 pounds of GreenClean Granular per acre-foot of water.
For example: larger containerized residential ponds or water gardens		*Multiple containers of GreenClean Granular will be needed.

DIRECTIONS FOR USE

It is a violation of Federal law to use this product in a manner inconsistent with its labeling.

During amphibian breeding seasons, do not apply near shallow water body margins.

Corrosive. Causes irreversible eye damage. Wear protective eyewear (goggles, face shield, or safety glasses) and gloves when applying GreenClean Granular. Wash hands after use.

Apply GreenClean Granular to any listed water and surface sites.

Application Surfaces Include:

CONTAINERIZED WATER SURFACES (with no outflow to the natural environment)
Water Gardens, Fish Ponds, Ornamental Pools/Ponds, Ornamental Waterfalls, Fountains, Standing Water, Irrigation Ponds.

GreenClean Granular is **NOT** intended for use in drinking water.

WATER TREATMENT

Use GreenClean Granular to treat, control, and prevent a broad spectrum of planktonic and filamentous blue-green algae. Effects of treatment are immediately apparent (bubbling, bleaching/discoloration of algae, floating of dead organic matter). Waters treated with GreenClean Granular are permissible to be used without interruption.

Rates for Treating String Algae:

POND SIZE	CURATIVE RATE
50 gallons	1 Tablespoon
100 gallons	1.5 Tablespoons
500 gallons	0.5 Cup
1,000 gallons	1 Cup
5,000 gallons	5 Cups
10,000 gallons	10 Cups

Note: 1 Lb of GreenClean Granular by weight = 2 Cups in volume

Application Instructions for Treating String Algae on Ornamental Waterfalls & Streams:

Step 1: Check pH levels before applying GreenClean Granular. GreenClean Granular can raise pH levels up to 1 unit.

Step 2: Apply early in the morning

Step 3: Turn off circulation.

Step 4: Apply GreenClean Granular to affected areas — including waterfalls and streams.

Step 5: Turn circulation back on after 10-20 minutes.

Rates for Treating Green Water Algae: (Not approved for use in California)

POND SIZE	HIGH CURATIVE RATE	LOW CURATIVE RATE
50 gallons	1 Tablespoon	0.5 Teaspoon
100 gallons	1.5 Tablespoons	1 Teaspoon
500 gallons	0.5 Cup	1.5 Tablespoons
1,000 gallons	1 Cup	3 Tablespoons
5,000 gallons	5 Cups	1 Cup
10,000 gallons	10 Cups	2 Cups

Note: 1 Lb of GreenClean Granular by weight = 2 Cups in volume

Application Instructions for Treating Green Water Algae:

Step 1: Check pH levels before applying GreenClean Granular. GreenClean Granular can raise pH levels up to 1 unit.

Step 2: Apply early in the morning.

Step 3: Shock with GreenClean Granular at the high curative rate.

Step 4: Treat as needed once per week with GreenClean Granular at the low curative rate in conjunction with water conditioners (such as beneficial bacteria).

Pond Cleaning: (Not approved for use in California)

HEAVY GROWTH	LOW GROWTH
4–6 cups per 1,000 sq. ft.	2–4 cups per 1,000 sq. ft.

Note: 1 Lb of GreenClean Granular by weight = 2 Cups in volume

Step 1: Drain pond (remove fish & plants).

Step 2: Apply GreenClean Granular to all surfaces.

Step 3: Rinse with water after 10-20 minutes.

Step 4: Drain pond.

Step 5: Re-fill pond (replace fish & plants after de-chlorinating as appropriate).

GENERAL TREATMENT NOTES

- Treat only a half or a third of any large body of water at a time.
- Control is most easily achieved when algae are not yet well established. Treat when growth first begins to appear.
- Dense, thick mats of algae throughout the water volume are indicative of heavy algae growth.
- Apply early in the morning under calm, sunny conditions, and when water temperatures are warm. Sunlight and higher temperatures both enhance GreenClean Granular activity; GreenClean Granular will work more slowly in colder water.
- Skim any dead algae and organic matter that rises to the water's surface after treatment. Allowing dead organics to sink and decay will provide a food source and additional nutrients that stimulate algae re-growth and further blooms.
- If using in conjunction with other water additives (such as bacterio or enzymes), always apply GreenClean Granular first and wait several hours before adding any other products.
- Re-treat areas if re-growth begins to appear. Allow 48 hours between consecutive treatments.
- Maintain ponds with GreenClean Granular maintenance rates at a frequency appropriate for your environmental conditions.
- After application, do not allow undiluted granules to remain in an area where humans or animals are exposed. Sweep up or remove undiluted granules. Undiluted granules may also be eliminated by thoroughly hosing down with water.
- Non-target plants will suffer contact burn if undiluted granules are accidentally spilled on them. Do not apply in such a way that the concentrated product comes in contact with flowering plants.
- **Never apply at higher than the application rates indicated under the Directions for Use**, as desirable plants could be potentially harmed.
- **Do not tank mix** with aquatic herbicides or algaecides containing copper or bromides. Always apply GreenClean Granular at least one day prior to the application of these products.

EFFECTIVENESS FACTORS

- Effects of GreenClean Granular treatment are immediately apparent (bubbling, bleaching/discoloration of algae, floating dead organic matter).
- GreenClean Granular treatments are successful when contact of the pesticide is made with the algae.
- Liquid applications will not sink through the water column as readily as a granular

- When treating surface mats and blooms, it is possible that GreenClean Granular will not penetrate the water column below the infested area, and a second application is then required for treating any bottom growing algae.
- Apply more often during the summer months when water consumption and temperatures are high.

APPLICATION METHODS

SPREADING / BROADCASTING: Broadcast GreenClean Granular with a mechanical spreader or by gloved hand, directly on the water surface, from shore or from a properly equipped boat. A hand spreader or any other applicator that will insure uniform coverage is acceptable.

SPOT TREATMENT: Apply GreenClean Granular directly over the infested area. Re-treatment is required when heavy growth occurs.

STORAGE AND DISPOSAL

Do not contaminate water, food, or feed by storage or disposal.

PESTICIDE STORAGE: Store in original containers in a cool, well-ventilated area, away from direct sunlight. Do not allow product to become overheated in storage. This may cause increased degradation of the product, which will decrease product effectiveness. In case of spill, flood area with large quantities of water. Do not store in a manner where cross-contamination with other pesticides or fertilizers could occur.

PESTICIDE DISPOSAL AND CONTAINER HANDLING: If empty – Nonrefillable container. Do not reuse or refill this container. Place in trash or offer for recycling if available.

If partly filled – Call your local solid waste agency for disposal instructions. Never place unused product down any indoor or outdoor drain.

WARRANTY

This material conforms to the description on the label and is reasonably fit for the purposes referred to in the directions for use. To the fullest extent permitted by law, the seller shall not be liable for timing, unfavorable temperatures, water conditions, presence of other materials, method of application, weather, watering practices, nature of soil, disease problem, condition of crop, incompatibility with other chemicals, pre-existing conditions and other conditions influencing the use of this product. Buyer assumes all risks associated with the use, storage, or handling of this material not in strict accordance with directions given herewith. **NO OTHER EXPRESS OR IMPLIED WARRANTY OF FITNESS OR MERCHANTABILITY IS MADE.**

BiSafe Systems^{LLC}

For additional information on GreenClean[®] Granular, call us toll-free: 1-888-273-3088. ©2012 Copyright BioSafe Systems, LLC. GreenClean[®] Granular is a registered trademark of BioSafe Systems, LLC. Always read and follow label directions. N101012V39 3.13